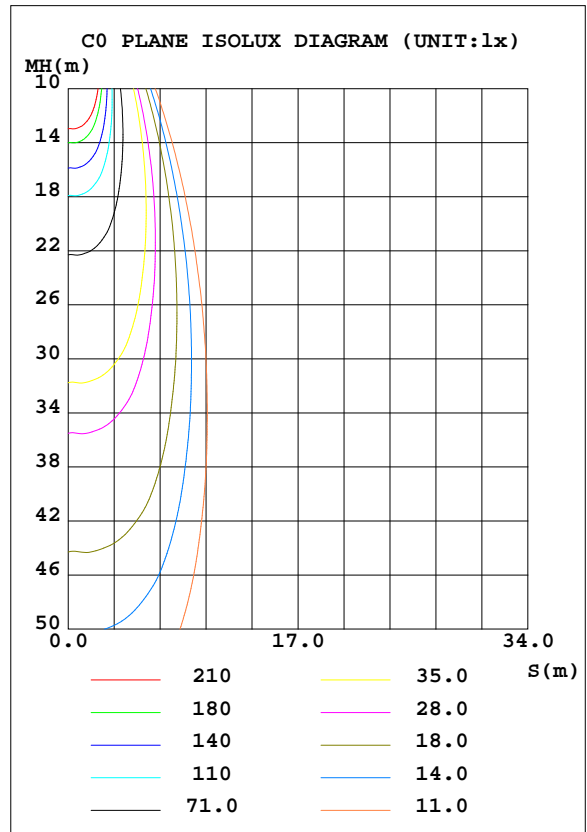
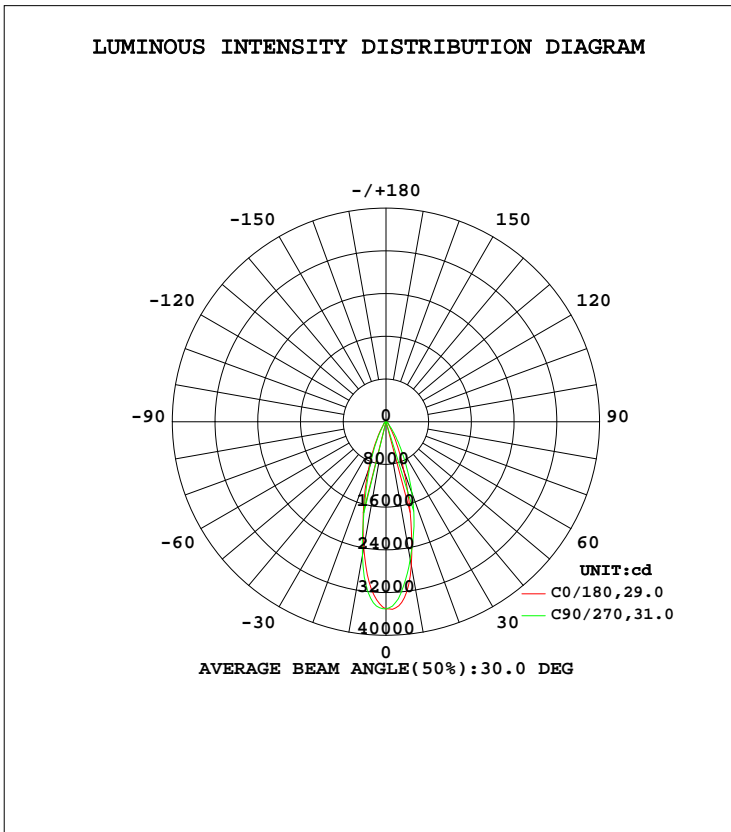


LUMINAIRE PHOTOMETRIC TEST REPORT

Test:U:220.01V I:0.4732A P:101.54W PF:0.9754 Freq:50.01Hz Lamp Flux:12995.1x1 lm		
NAME: Flood Light	TYPE:LED	WEIGHT:N/A
SPEC.:N/A	DIM.:	SERIAL No.:N/A
MFR.: SHENZHEN YOUWIN OPTRONICS CO.,LTD	SUR.:	Shielding Angle:N/A

DATA OF LAMP		PHOTOMETRIC DATA Eff: 127.98 lm/W			
MODEL	YWFLA3-100	I _{max} (cd)	35290	S/MH(C0/180)	0.47
NOMINAL POWER(W)	100	LOR(%)	100.0	S/MH(C90/270)	0.46
RATED VOLTAGE(V)	220	TOTAL FLUX(lm)	12995	η UP, DN(C0-180)	0.1,54.9
NOMINAL FLUX(lm)	12995.1	CIE CLASS	DIRECT	η UP, DN(C180-360)	0.1,44.9
LAMPS INSIDE	1	η up(%)	0.3	CIBSE SHR NOM	0.50
TEST VOLTAGE(V)	220	η down(%)	99.7	CIBSE SHR MAX	0.50



C Range: 0 - 360DEG
 C Interval: 22.5DEG
 Test Speed: HIGH
 Temperature:24.5DEG
 Operators:William
 Test Date:2018-07-06

γ Range: 0 - 180DEG
 γ Interval: 1.0DEG
 Test System:EVERFINE GO-R5000_V2 SYSTEM V2.0.366
 Humidity:65.7%
 Test Distance:26.000m [K=1.3825]
 Remarks:

ZONAL FLUX DIAGRAM

ZONAL FLUX DIAGRAM:

γ	C0	C45	C90	C135	C180	C225	C270	C315	γ	Φ zone	Φ total	%lum,lamp
10	2730	2694	2614	2496	2400	2409	2547	2695	0- 10	2899	2899	22.3,22.3
20	998.6	1223	1421	1279	976.4	841.5	876.4	930.3	10- 20	4772	7671	59,59
30	268.5	372.2	500.4	441.3	271.0	210.6	223.8	247.5	20- 30	2832	10503	80.8,80.8
40	90.03	95.13	134.2	123.8	79.86	75.86	82.44	88.38	30- 40	1092	11595	89.2,89.2
50	48.92	47.83	61.47	58.11	45.65	43.98	49.56	51.38	40- 50	536.0	12131	93.3,93.3
60	30.77	33.41	38.11	37.38	30.65	27.97	31.65	32.24	50- 60	360.1	12491	96.1,96.1
70	21.94	20.66	19.24	20.42	20.73	19.51	19.13	21.87	60- 70	259.0	12750	98.1,98.1
80	10.77	10.54	6.603	9.274	9.749	10.71	8.388	12.89	70- 80	156.4	12906	99.3,99.3
90	0.7330	0.5484	0.0637	0.0474	0.3174	0.8416	0.2541	0.8878	80- 90	54.34	12961	99.7,99.7
100	0.7494	0	0	0	0.3955	0.0289	0.0145	0.0364	90-100	0.6238	12961	99.7,99.7
110	0.1026	0	0	0	0.0433	0.0432	0.0435	0.0437	100-110	0.8172	12962	99.7,99.7
120	0.0217	0	0	0	0.0650	0.0651	0.0798	0.0801	110-120	0.3333	12962	99.7,99.7
130	0.0289	0.0072	0.0144	0.0073	0.1083	0.1013	0.1238	0.1456	120-130	0.4302	12963	99.8,99.8
140	0.3533	0.2385	0.2900	0.2611	0.3325	0.3629	0.5303	0.4595	130-140	1.259	12964	99.8,99.8
150	1.665	1.276	1.333	1.503	1.295	1.363	1.619	1.530	140-150	4.951	12969	99.8,99.8
160	3.436	3.061	2.933	3.162	3.301	3.220	3.399	3.080	150-160	10.33	12979	99.9,99.9
170	4.864	4.670	4.627	4.532	4.514	4.660	4.814	4.806	160-170	10.96	12990	100,100
180	5.734	5.598	5.269	5.285	5.647	5.461	5.379	5.233	170-180	4.780	12995	100,100
DEG	LUMINOUS INTENSITY:×10cd									UNIT:lm		

Conical surface Flux(90deg): 11893 lm

%lum = 91.5%
%lamp = 91.5%

Conical surface Flux(120deg): 12491 lm

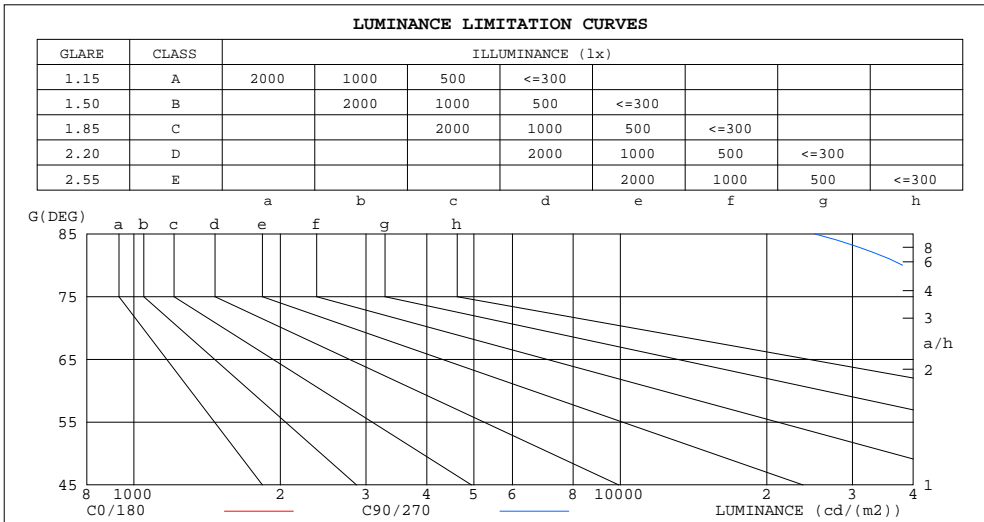
%lum = 96.1%
%lamp = 96.1%

C Range: 0 - 360DEG
C Interval: 22.5DEG
Test Speed: HIGH
Temperature:24.5DEG
Operators:William
Test Date:2018-07-06

γ Range: 0 - 180DEG
γ Interval: 1.0DEG
Test System:EVERFINE GO-R5000_V2 SYSTEM V2.0.366
Humidity:65.7%
Test Distance:26.000m [K=1.3825]
Remarks:

LUMINANCE LIMITATION CURVES

Test:U:220.01V I:0.4732A P:101.54W PF:0.9754 Freq:50.01Hz Lamp Flux:12995.1x1 lm		
NAME: Flood Light	TYPE:LED	WEIGHT:N/A
SPEC.:N/A	DIM.:	SERIAL No.:N/A
MFR.: SHENZHEN YOUWIN OPTRONICS CO.,LTD	SUR.:	Shielding Angle:N/A



LUMINANCE cd/(m2)		
G(DEG)	C0/180	C90/270
85	61582	25069
80	62451	38034
75	67787	47849
70	64624	56278
65	62238	65812
60	61998	76246
55	64072	86339
50	76654	95646
45	96388	113793

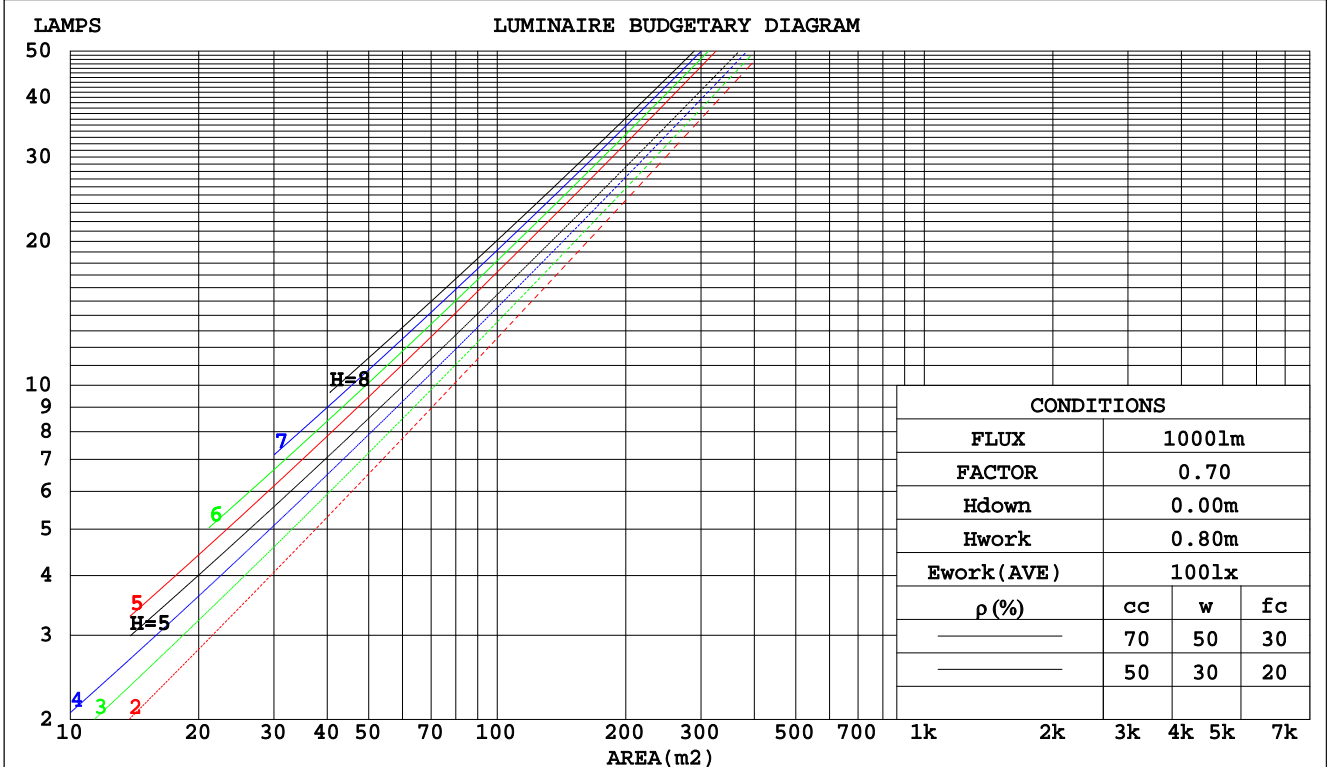
C Range: 0 - 360DEG
 C Interval: 22.5DEG
 Test Speed: HIGH
 Temperature:24.5DEG
 Operators:William
 Test Date:2018-07-06

γ Range: 0 - 180DEG
 γ Interval: 1.0DEG
 Test System:EVERFINE GO-R5000_V2 SYSTEM V2.0.366
 Humidity:65.7%
 Test Distance:26.000m [K=1.3825]
 Remarks:

CU AND LUMINAIRE BUDGETARY ESTIMATE DIAGRAM

Test:U:220.01V I:0.4732A P:101.54W PF:0.9754 Freq:50.01Hz Lamp Flux:12995.1x1 lm		
NAME: Flood Light	TYPE:LED	WEIGHT:N/A
SPEC.:N/A	DIM.:	SERIAL No.:N/A
MFR.: SHENZHEN YOUWIN OPTRONICS CO.,LTD	SUR.:	Shielding Angle:N/A

pcc	80%			70%			50%			30%			10%			0
pw	50%	30%	10%	50%	30%	10%	50%	30%	10%	50%	30%	10%	50%	30%	10%	0
pfc	20%			20%			20%			20%			20%			0
RCR	RCR:Room Cavity Ratio						Coefficients of Utilization(CU)									
0.0	1.19	1.19	1.19	1.16	1.16	1.16	1.11	1.11	1.11	1.06	1.06	1.06	1.02	1.02	1.02	.00
1.0	1.11	1.08	1.06	1.09	1.06	1.05	1.05	1.03	1.01	1.01	.99	.98	.97	.96	.95	.94
2.0	1.04	.90	.97	1.02	.99	.96	.99	.96	.93	.96	.93	.91	.93	.91	.89	.88
3.0	.98	.93	.89	.96	.92	.88	.94	.90	.87	.91	.88	.86	.89	.86	.84	.83
4.0	.92	.87	.83	.91	.86	.83	.89	.85	.82	.87	.84	.81	.85	.82	.80	.78
5.0	.87	.82	.78	.87	.82	.78	.85	.81	.77	.83	.79	.77	.82	.78	.76	.74
6.0	.83	.78	.74	.82	.77	.74	.81	.77	.73	.80	.76	.73	.78	.75	.72	.71
7.0	.79	.74	.70	.79	.74	.70	.78	.73	.70	.76	.72	.69	.75	.72	.69	.68
8.0	.76	.71	.67	.76	.71	.67	.74	.70	.67	.73	.69	.66	.73	.69	.66	.65
9.0	.73	.68	.64	.73	.68	.64	.72	.67	.64	.71	.67	.64	.70	.66	.64	.62
10.0	.70	.65	.62	.70	.65	.62	.69	.65	.61	.68	.64	.61	.68	.64	.61	.60



C Range: 0 - 360DEG
 C Interval: 22.5DEG
 Test Speed: HIGH
 Temperature:24.5DEG
 Operators:William
 Test Date:2018-07-06

γ Range: 0 - 180DEG
 γ Interval: 1.0DEG
 Test System:EVERFINE GO-R5000_V2 SYSTEM V2.0.366
 Humidity:65.7%
 Test Distance:26.000m [K=1.3825]
 Remarks:

WEC AND CCEC

Test:U:220.01V I:0.4732A P:101.54W PF:0.9754 Freq:50.01Hz Lamp Flux:12995.1x1 lm		
NAME: Flood Light	TYPE:LED	WEIGHT:N/A
SPEC.:N/A	DIM.:	SERIAL No.:N/A
MFR.: SHENZHEN YOUWIN OPTRONICS CO.,LTD	SUR.:	Shielding Angle:N/A

ρcc	80%			70%			50%			30%			10%			0
ρw	50%	30%	10%	50%	30%	10%	50%	30%	10%	50%	30%	10%	50%	30%	10%	0
ρfc	20%			20%			20%			20%			20%			0
RCR	RCR:Room Cavity Ratio						Wall Exitance Coefficients(WEC)									
0.0																
1.0	.175	.100	.032	.168	.096	.030	.155	.089	.028	.144	.083	.027	.133	.077	.025	
2.0	.164	.090	.028	.158	.087	.027	.147	.082	.025	.137	.077	.024	.128	.073	.023	
3.0	.153	.081	.024	.148	.079	.024	.139	.075	.023	.131	.072	.022	.123	.068	.021	
4.0	.143	.074	.022	.139	.073	.022	.131	.070	.021	.124	.067	.020	.117	.064	.019	
5.0	.135	.069	.020	.131	.067	.020	.124	.065	.019	.118	.062	.019	.112	.060	.018	
6.0	.127	.064	.018	.124	.063	.018	.118	.061	.018	.113	.059	.017	.108	.057	.017	
7.0	.120	.060	.017	.118	.059	.017	.113	.057	.016	.108	.055	.016	.103	.054	.016	
8.0	.114	.056	.016	.112	.055	.016	.107	.054	.015	.103	.052	.015	.099	.051	.015	
9.0	.109	.053	.015	.107	.052	.015	.103	.051	.014	.099	.050	.014	.095	.048	.014	
10.0	.104	.050	.014	.102	.049	.014	.098	.048	.014	.095	.047	.013	.092	.046	.013	

ρcc	80%			70%			50%			30%			10%			0
ρw	50%	30%	10%	50%	30%	10%	50%	30%	10%	50%	30%	10%	50%	30%	10%	0
ρfc	20%			20%			20%			20%			20%			0
RCR	RCR:Room Cavity Ratio						Ceiling Cavity Exitance Coefficients(CCEC)									
0.0	.192	.192	.192	.165	.165	.165	.112	.112	.112	.065	.065	.065	.021	.021	.021	
1.0	.173	.159	.147	.148	.137	.127	.101	.094	.088	.058	.054	.051	.019	.018	.016	
2.0	.157	.135	.116	.135	.116	.100	.092	.080	.070	.053	.047	.041	.017	.015	.013	
3.0	.144	.116	.093	.123	.100	.081	.085	.069	.057	.049	.040	.033	.016	.013	.011	
4.0	.133	.101	.076	.114	.087	.066	.078	.061	.047	.045	.036	.028	.015	.012	.009	
5.0	.123	.089	.063	.106	.077	.055	.073	.054	.039	.042	.032	.023	.014	.010	.008	
6.0	.115	.079	.054	.099	.069	.047	.068	.048	.033	.040	.028	.020	.013	.009	.006	
7.0	.108	.071	.046	.093	.062	.040	.064	.043	.028	.037	.026	.017	.012	.008	.006	
8.0	.102	.065	.040	.087	.056	.035	.061	.040	.025	.035	.023	.015	.011	.008	.005	
9.0	.096	.060	.035	.083	.052	.031	.057	.036	.022	.033	.021	.013	.011	.007	.004	
10.0	.091	.055	.031	.079	.048	.027	.055	.034	.019	.032	.020	.011	.010	.007	.004	

C Range: 0 - 360DEG
 C Interval: 22.5DEG
 Test Speed: HIGH
 Temperature:24.5DEG
 Operators:William
 Test Date:2018-07-06

γ Range: 0 - 180DEG
 γ Interval: 1.0DEG
 Test System:EVERFINE GO-R5000_V2 SYSTEM V2.0.366
 Humidity:65.7%
 Test Distance:26.000m [K=1.3825]
 Remarks:

UGR(Unified Glare Rating) Table

Test:U:220.01V I:0.4732A P:101.54W PF:0.9754 Freq:50.01Hz Lamp Flux:12995.1x1 lm										
NAME: Flood Light					TYPE:LED			WEIGHT:N/A		
SPEC.:N/A					DIM.:			SERIAL No.:N/A		
MFR.: SHENZHEN YOUWIN OPTRONICS CO.,LTD					SUR.:			Shielding Angle:N/A		
ceiling/cavity	0.7	0.7	0.5	0.5	0.3	0.7	0.7	0.5	0.5	0.3
walls	0.5	0.3	0.5	0.3	0.3	0.5	0.3	0.5	0.3	0.3
working plane	0.2	0.2	0.2	0.2	0.2	0.2	0.2	0.2	0.2	0.2
Room dimensions	Viewed crosswise					Viewed endwise				
x = 2H y = 2H	22.4	23.3	22.6	23.4	23.6	24.1	24.9	24.3	25.1	25.2
3H	23.6	24.4	23.9	24.6	24.8	24.8	25.5	25.0	25.7	25.9
4H	24.3	25.0	24.6	25.3	25.5	25.0	25.8	25.3	26.0	26.2
6H	24.8	25.6	25.1	25.8	26.0	25.2	25.9	25.5	26.1	26.4
8H	25.1	25.7	25.4	26.0	26.3	25.2	25.9	25.5	26.2	26.4
12H	25.2	25.9	25.5	26.1	26.4	25.2	25.9	25.5	26.1	26.4
4H 2H	22.9	23.6	23.2	23.9	24.1	24.3	25.0	24.5	25.2	25.5
3H	24.3	24.9	24.6	25.2	25.5	25.2	25.8	25.5	26.1	26.4
4H	25.1	25.7	25.4	26.0	26.3	25.6	26.2	25.9	26.5	26.8
6H	25.8	26.3	26.2	26.7	27.0	25.8	26.4	26.2	26.7	27.1
8H	26.1	26.6	26.5	26.9	27.3	25.9	26.4	26.3	26.8	27.1
12H	26.3	26.7	26.7	27.1	27.5	25.9	26.4	26.3	26.8	27.2
8H 4H	25.3	25.8	25.7	26.2	26.6	25.8	26.3	26.2	26.6	27.0
6H	26.2	26.6	26.6	27.0	27.4	26.2	26.6	26.6	27.0	27.4
8H	26.6	27.0	27.1	27.4	27.8	26.3	26.7	26.8	27.1	27.5
12H	26.9	27.2	27.4	27.7	28.2	26.4	26.7	26.8	27.1	27.6
12H 4H	25.3	25.8	25.8	26.2	26.6	25.8	26.2	26.2	26.6	27.0
6H	26.3	26.6	26.7	27.1	27.5	26.2	26.6	26.7	27.0	27.5
8H	26.7	27.0	27.2	27.5	27.9	26.4	26.7	26.9	27.2	27.6
Variations with the observer position at spacings:										
S = 1.0H	+ 0.3 / - 0.4					+ 0.9 / - 0.7				
1.5H	+ 0.3 / - 0.2					+ 1.9 / - 0.6				
2.0H	+ 0.5 / - 0.2					+ 0.7 / - 0.6				

CIE Pub.117, 12995 lm Total Lamp Luminous Flux Corrected (8log(F/F0) = 8.9)

C Range: 0 - 360DEG
 C Interval: 22.5DEG
 Test Speed: HIGH
 Temperature:24.5DEG
 Operators:William
 Test Date:2018-07-06

γ Range: 0 - 180DEG
 γ Interval: 1.0DEG
 Test System:EVERFINE GO-R5000_V2 SYSTEM V2.0.366
 Humidity:65.7%
 Test Distance:26.000m [K=1.3825]
 Remarks:

UTILIZATION FACTORS TABLE

Test:U:220.01V I:0.4732A P:101.54W PF:0.9754 Freq:50.01Hz Lamp Flux:12995.1x1 lm		
NAME: Flood Light	TYPE:LED	WEIGHT:N/A
SPEC.:N/A	DIM.:	SERIAL No.:N/A
MFR.: SHENZHEN YOUWIN OPTRONICS CO.,LTD	SUR.:	Shielding Angle:N/A

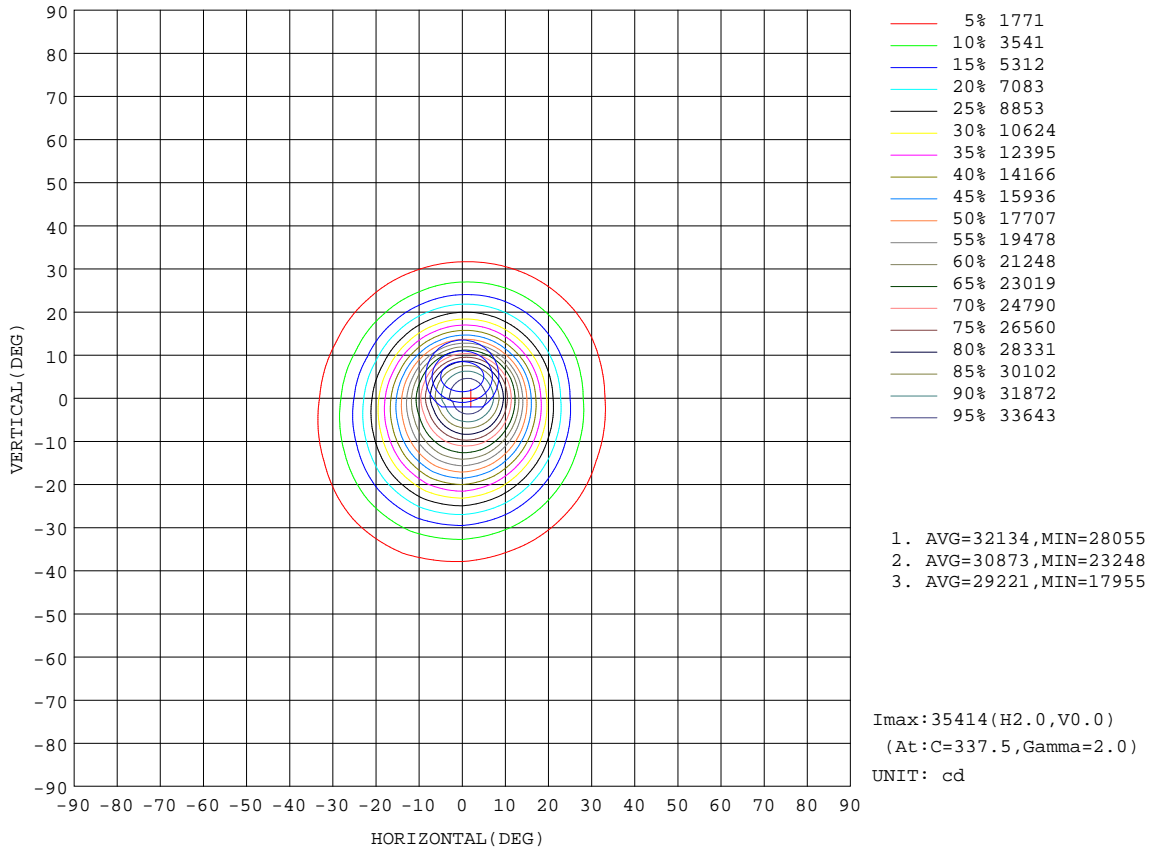
REFLECTANCE										
Ceiling	0.8	0.8	0.8	0.7	0.7	0.7	0.5	0.5	0.5	0
Walls	0.7	0.5	0.3	0.7	0.5	0.3	0.7	0.5	0.3	0
Working plane	0.2	0.2	0.2	0.2	0.2	0.2	0.2	0.2	0.2	0
ROOM INDEX	UTILIZATION FACTORS(PERCENT) $k(RI) \times RCR = 5$									
k = 0.60	85	78	74	84	78	74	84	78	74	70
0.80	92	86	82	92	86	82	90	85	82	78
1.00	97	91	87	96	91	87	95	90	86	82
1.25	101	96	92	100	95	91	98	94	91	86
1.50	104	99	95	103	98	95	101	97	94	89
2.00	107	103	99	106	101	98	103	99	97	91
2.50	109	105	102	107	104	101	104	101	99	92
3.00	111	107	104	109	106	103	105	103	101	94
4.00	113	110	107	111	108	106	107	105	103	96
5.00	114	112	110	112	110	108	108	106	105	97
ROOM INDEX	UF(total)									Direct
According to DIN EN 13032-2 2004			Suspended				SHRNOM = 1.25			

C Range: 0 - 360DEG
 C Interval: 22.5DEG
 Test Speed: HIGH
 Temperature:24.5DEG
 Operators:William
 Test Date:2018-07-06

γ Range: 0 - 180DEG
 γ Interval: 1.0DEG
 Test System:EVERFINE GO-R5000_V2 SYSTEM V2.0.366
 Humidity:65.7%
 Test Distance:26.000m [K=1.3825]
 Remarks:

ISOCANDELA DIAGRAM

Test:U:220.01V I:0.4732A P:101.54W PF:0.9754 Freq:50.01Hz Lamp Flux:12995.1x1 lm		
NAME: Flood Light	TYPE:LED	WEIGHT:N/A
SPEC.:N/A	DIM.:	SERIAL No.:N/A
MFR.: SHENZHEN YOUWIN OPTRONICS CO.,LTD	SUR.:	Shielding Angle:N/A

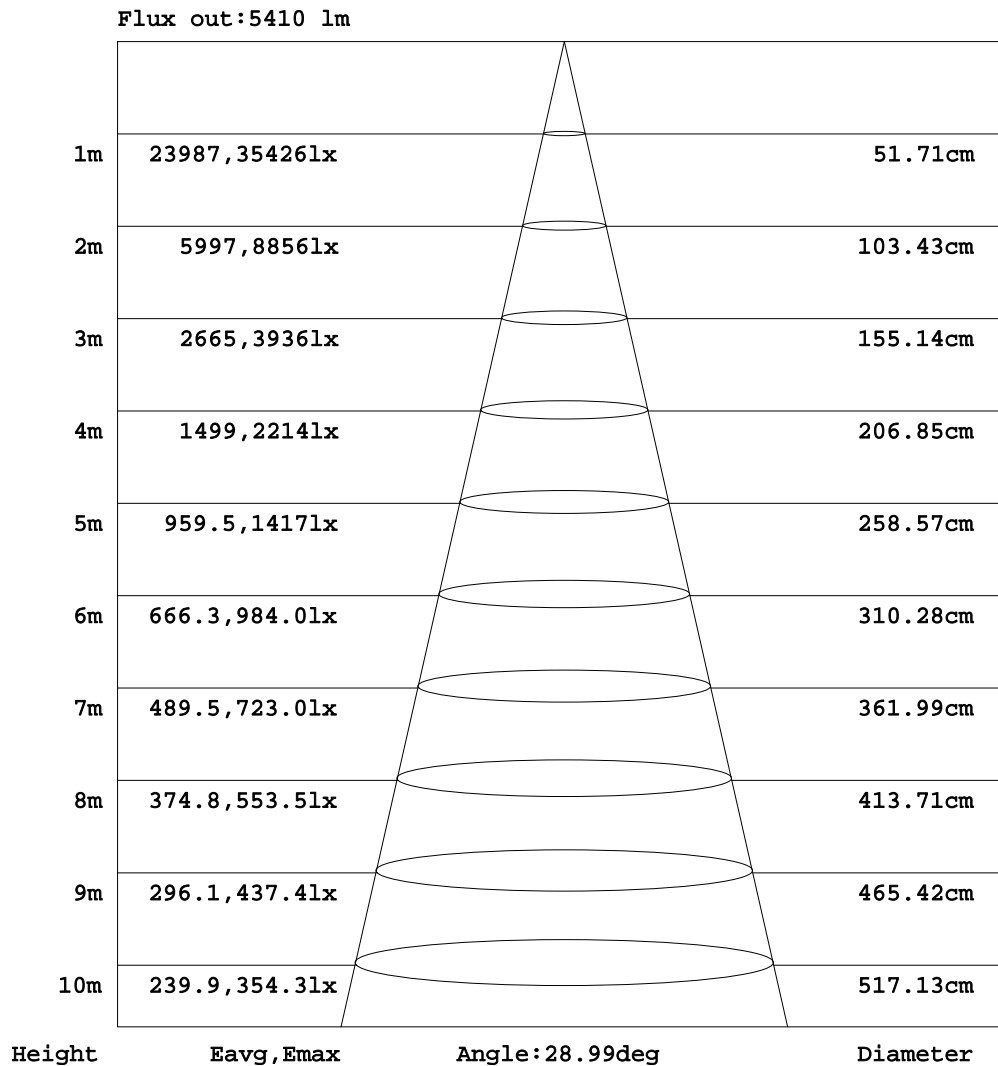


C Range: 0 - 360DEG
 C Interval: 22.5DEG
 Test Speed: HIGH
 Temperature: 24.5DEG
 Operators: William
 Test Date: 2018-07-06

γ Range: 0 - 180DEG
 γ Interval: 1.0DEG
 Test System: EVERFINE GO-R5000_V2 SYSTEM V2.0.366
 Humidity: 65.7%
 Test Distance: 26.000m [K=1.3825]
 Remarks:

AAI Figure

Test:U:220.01V I:0.4732A P:101.54W PF:0.9754 Freq:50.01Hz Lamp Flux:12995.1x1 lm		
NAME: Flood Light	TYPE:LED	WEIGHT:N/A
SPEC.:N/A	DIM.:	SERIAL No.:N/A
MFR.: SHENZHEN YOUWIN OPTRONICS CO.,LTD	SUR.:	Shielding Angle:N/A



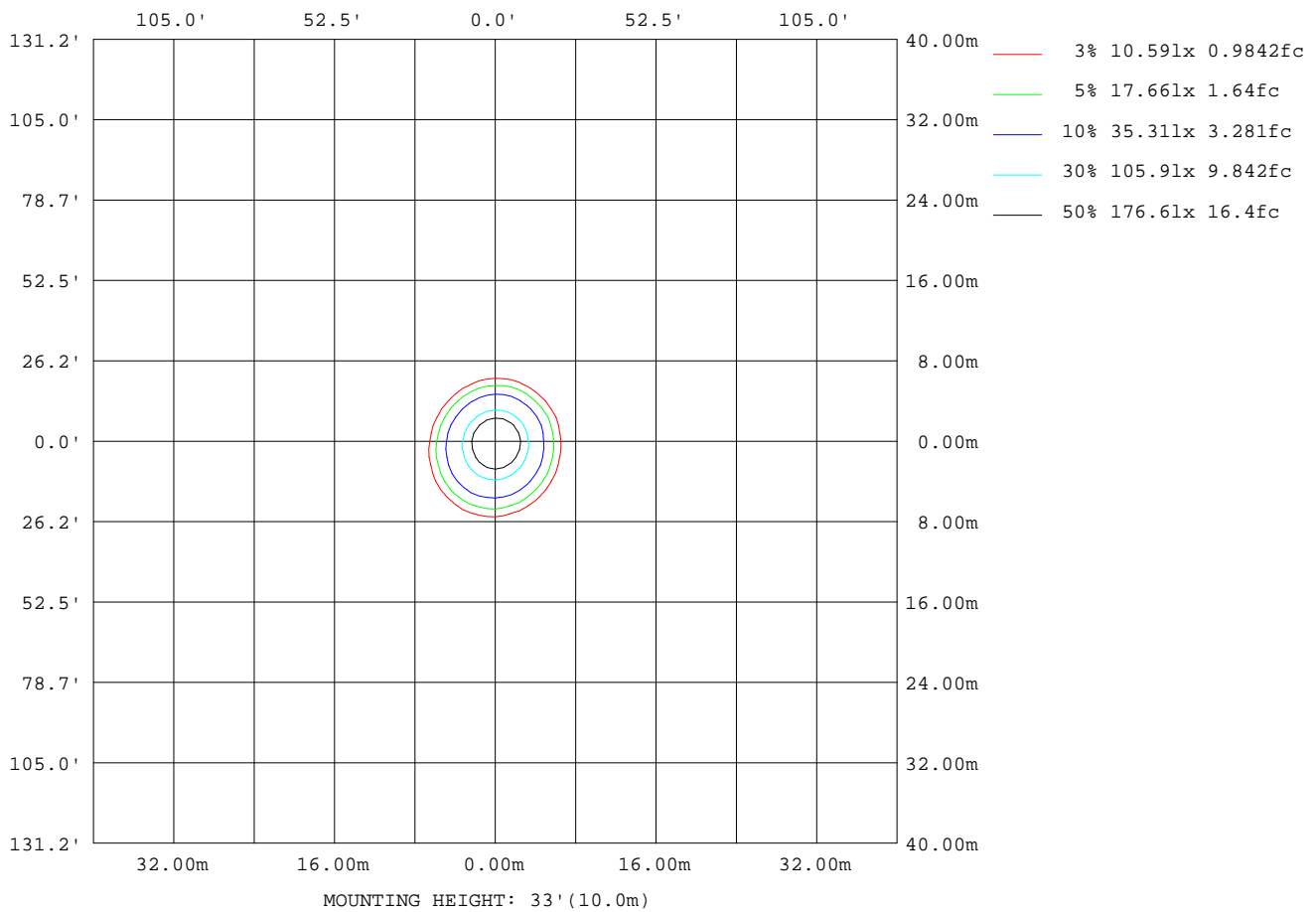
Note:The Curves indicate the illuminated area and the average illumination when the luminaire is at different distance.

C Range: 0 - 360DEG
 C Interval: 22.5DEG
 Test Speed: HIGH
 Temperature:24.5DEG
 Operators:William
 Test Date:2018-07-06

γ Range: 0 - 180DEG
 γ Interval: 1.0DEG
 Test System:EVERFINE GO-R5000_V2 SYSTEM V2.0.366
 Humidity:65.7%
 Test Distance:26.000m [K=1.3825]
 Remarks:

ISOLUX DIAGRAM

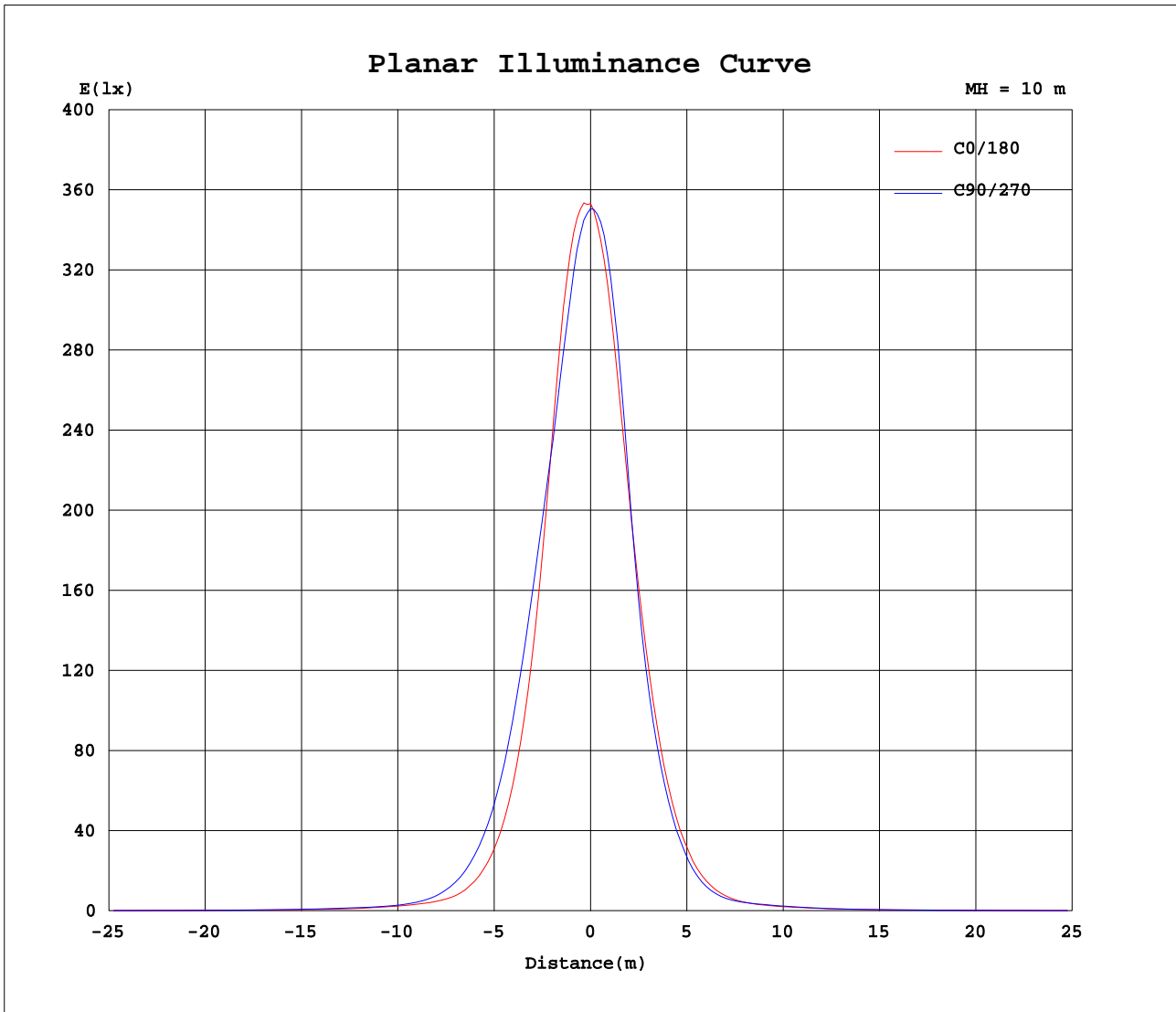
Test:U:220.01V I:0.4732A P:101.54W PF:0.9754 Freq:50.01Hz Lamp Flux:12995.1x1 lm		
NAME: Flood Light	TYPE:LED	WEIGHT:N/A
SPEC.:N/A	DIM.:	SERIAL No.:N/A
MFR.: SHENZHEN YOUWIN OPTRONICS CO.,LTD	SUR.:	Shielding Angle:N/A



C Range: 0 - 360DEG
 C Interval: 22.5DEG
 Test Speed: HIGH
 Temperature:24.5DEG
 Operators:William
 Test Date:2018-07-06

γ Range: 0 - 180DEG
 γ Interval: 1.0DEG
 Test System:EVERFINE GO-R5000_V2 SYSTEM V2.0.366
 Humidity:65.7%
 Test Distance:26.000m [K=1.3825]
 Remarks:

Planar Illuminance Curve



C Range: 0 - 360DEG
C Interval: 22.5DEG
Test Speed: HIGH
Temperature: 24.5DEG
Operators: William
Test Date: 2018-07-06

γ Range: 0 - 180DEG
 γ Interval: 1.0DEG
Test System: EVERFINE GO-R5000_V2 SYSTEM V2.0.366
Humidity: 65.7%
Test Distance: 26.000m [K=1.3825]
Remarks:

LUMINOUS DISTRIBUTION INTENSITY DATA

Test:U:220.01V I:0.4732A P:101.54W PF:0.9754 Freq:50.01Hz Lamp Flux:12995.1x1 lm		
NAME: Flood Light	TYPE:LED	WEIGHT:N/A
SPEC.:N/A	DIM.:	SERIAL No.:N/A
MFR.: SHENZHEN YOUWIN OPTRONICS CO.,LTD	SUR.:	Shielding Angle:N/A

Table--1

UNIT: x10cd

C(DEG) γ (DEG)	0	22.5	45	67.5	90	112.5	135	157.5	180	202.5	225	247.5	270	292.5	315	337.5			
0	3506	3506	3506	3506	3506	3506	3506	3506	3506	3506	3506	3506	3506	3506	3506	3506			
5	3399	3371	3330	3285	3224	3190	3144	3138	3149	3167	3219	3266	3315	3364	3400	3424			
10	2730	2709	2694	2665	2614	2564	2496	2435	2400	2368	2409	2474	2547	2625	2695	2760			
15	1754	1827	1928	2003	2032	1988	1879	1750	1620	1522	1488	1491	1528	1579	1633	1720			
20	999	1093	1223	1347	1421	1397	1279	1119	976	869	842	850	876	907	930	974			
25	528	593	697	812	881	875	783	649	533	462	441	446	470	494	509	524			
30	268	306	372	448	500	504	441	348	271	224	211	213	224	238	247	266			
35	138	153	188	230	262	268	233	177	137	116	111	112	115	119	125	136			
40	90.0	88.0	95.1	113	134	141	124	95.5	79.9	74.6	75.9	78.4	82.4	83.9	88.4	93.2			
45	67.7	62.6	62.8	70.2	80.4	84.9	77.8	65.0	59.3	56.5	59.9	62.1	67.2	69.9	73.1	71.7			
50	48.9	45.6	47.8	55.7	61.5	63.6	58.1	49.7	45.7	42.5	44.0	46.2	49.6	50.7	51.4	50.6			
55	36.5	36.1	40.3	45.3	49.5	50.2	47.2	40.7	36.5	33.8	34.1	34.2	37.2	37.2	39.0	37.9			
60	30.8	30.8	33.4	35.8	38.1	37.9	37.4	33.4	30.7	27.8	28.0	28.1	31.7	30.9	32.2	30.5			
65	26.1	24.7	26.8	26.8	27.8	27.5	28.3	25.7	24.9	23.0	24.4	24.4	27.6	27.1	29.3	27.1			
70	21.9	19.8	20.7	19.2	19.2	19.0	20.4	19.2	20.7	18.8	19.5	18.0	19.1	18.4	21.9	21.7			
75	17.4	15.1	16.8	13.4	12.4	12.8	15.2	14.0	14.9	14.5	17.3	13.6	13.7	14.3	18.7	17.1			
80	10.8	10.6	10.5	8.10	6.60	7.31	9.27	10.00	9.75	10.8	10.7	8.84	8.39	10.0	12.9	12.6			
85	5.33	5.63	5.13	3.65	2.18	3.12	4.43	5.11	4.76	6.24	5.63	4.13	3.05	5.17	6.78	6.95			
90	0.73	0.67	0.55	0.24	0.06	0.03	0.05	0.04	0.32	0.55	0.84	0.50	0.25	0.50	0.89	1.26			
95	0.00	0.01	0.00	0.00	0.00	0.00	0.00	0.01	0.01	0.01	0.01	0.00	0.00	0.00	0.01	0.00			
100	0.75	0.38	0.00	0.00	0.00	0.00	0.00	0.23	0.40	0.17	0.03	0.02	0.01	0.02	0.04	0.41			
105	0.33	0.17	0.00	0.00	0.00	0.00	0.00	0.10	0.12	0.04	0.04	0.02	0.03	0.03	0.04	0.11			
110	0.10	0.03	0.00	0.00	0.00	0.00	0.00	0.02	0.04	0.04	0.04	0.04	0.04	0.05	0.04	0.04			
115	0.02	0.02	0.00	0.00	0.00	0.00	0.00	0.02	0.06	0.05	0.05	0.06	0.07	0.06	0.06	0.05			
120	0.02	0.02	0.00	0.00	0.00	0.00	0.00	0.02	0.06	0.06	0.07	0.07	0.08	0.08	0.08	0.07			
125	0.02	0.02	0.01	0.01	0.01	0.00	0.01	0.02	0.08	0.08	0.07	0.07	0.09	0.09	0.09	0.07			
130	0.03	0.02	0.01	0.01	0.01	0.01	0.01	0.02	0.11	0.11	0.10	0.09	0.12	0.12	0.15	0.11			
135	0.12	0.09	0.06	0.10	0.10	0.10	0.07	0.11	0.17	0.18	0.17	0.22	0.27	0.23	0.24	0.20			
140	0.35	0.28	0.24	0.28	0.29	0.30	0.26	0.31	0.33	0.35	0.36	0.44	0.53	0.50	0.46	0.39			
145	0.84	0.70	0.59	0.66	0.62	0.72	0.70	0.74	0.67	0.70	0.72	0.90	0.99	0.97	0.85	0.77			
150	1.67	1.43	1.28	1.33	1.33	1.38	1.50	1.48	1.29	1.35	1.36	1.60	1.62	1.65	1.53	1.42			
155	2.50	2.23	2.07	2.07	2.01	2.13	2.33	2.27	2.28	2.34	2.29	2.52	2.28	2.48	2.26	2.32			
160	3.44	3.11	3.06	2.89	2.93	2.96	3.16	3.16	3.30	3.31	3.22	3.45	3.40	3.10	3.08	3.13			
165	4.22	3.81	3.84	3.70	3.63	3.50	3.84	3.99	4.10	4.13	4.12	4.29	4.25	4.08	4.11	3.93			
170	4.86	4.55	4.67	4.57	4.63	4.32	4.53	4.64	4.51	4.55	4.66	4.74	4.81	4.74	4.81	4.47			
175	5.59	5.15	5.40	5.44	5.28	5.11	5.29	5.26	5.14	5.11	5.09	5.15	5.15	5.15	5.31	4.99			
180	5.73	5.44	5.60	5.36	5.27	5.23	5.29	5.34	5.65	5.62	5.46	5.61	5.38	5.27	5.23	5.32			

C Range: 0 - 360DEG
 C Interval: 22.5DEG
 Test Speed: HIGH
 Temperature:24.5DEG
 Operators:William
 Test Date:2018-07-06

γ Range: 0 - 180DEG
 γ Interval: 1.0DEG
 Test System:EVERFINE GO-R5000_V2 SYSTEM V2.0.366
 Humidity:65.7%
 Test Distance:26.000m [K=1.3825]
 Remarks: