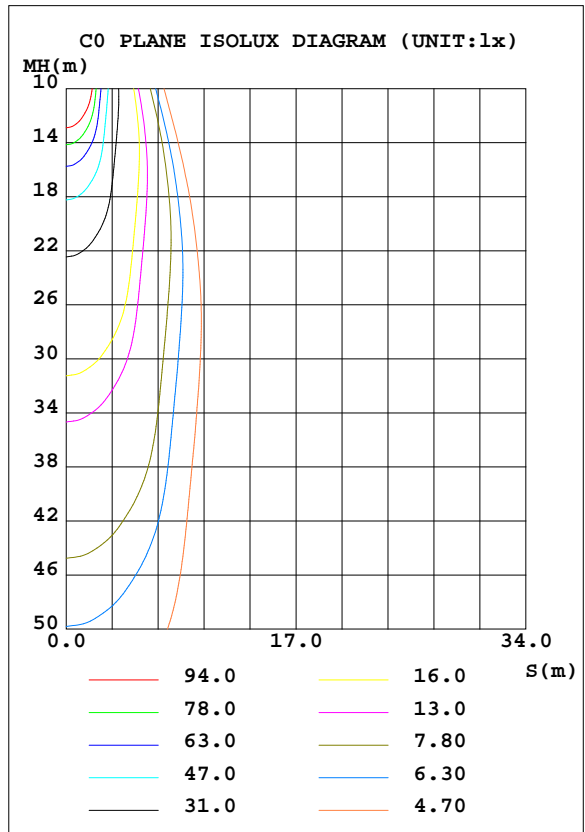
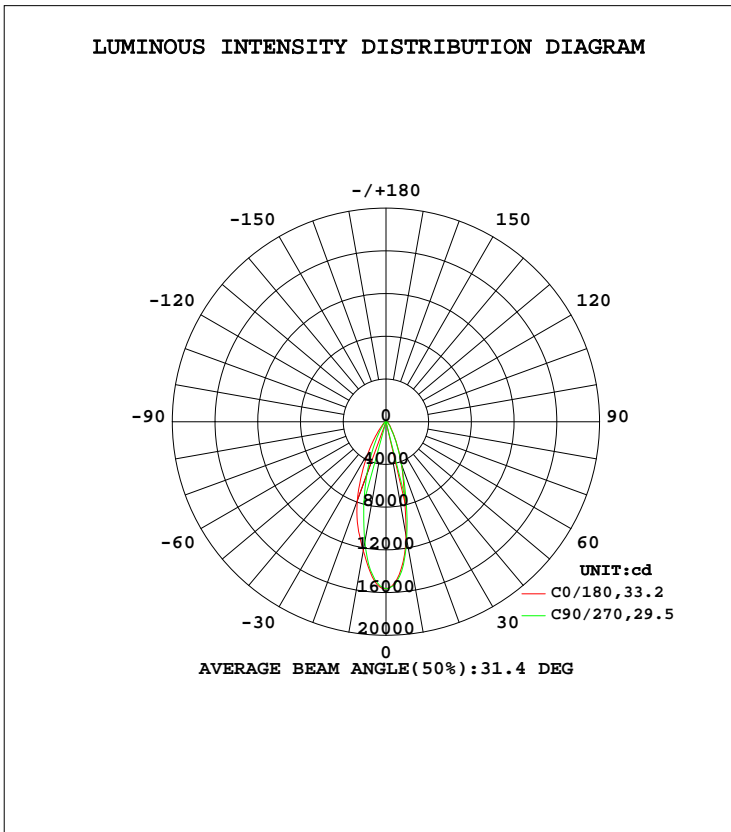


LUMINAIRE PHOTOMETRIC TEST REPORT

Test:U:230.01V I:0.2343A P:50.321W PF:0.9873 Freq:50.01Hz Lamp Flux:6741.6x1 lm		
NAME: Linear High Bay Light	TYPE:LED	WEIGHT:N/A
SPEC.:N/A	DIM.:	SERIAL No.:N/A
MFR.: YOUWIN	SUR.:	Shielding Angle:N/A

DATA OF LAMP		PHOTOMETRIC DATA Eff: 133.97 lm/W			
MODEL	YWHBLA-050	I _{max} (cd)	15656	S/MH(C0/180)	0.64
NOMINAL POWER(W)	50	LOR(%)	100.0	S/MH(C90/270)	0.51
RATED VOLTAGE(V)	230	TOTAL FLUX(lm)	6741.6	η UP, DN(C0-180)	0.1,46.5
NOMINAL FLUX(lm)	6741.6	CIE CLASS	DIRECT	η UP, DN(C180-360)	0.1,53.2
LAMPS INSIDE	1	η up(%)	0.3	CIBSE SHR NOM	0.50
TEST VOLTAGE(V)	230	η down(%)	99.7	CIBSE SHR MAX	0.55



C Range: 0 - 360DEG
 C Interval: 22.5DEG
 Test Speed: HIGH
 Temperature:24.5DEG
 Operators:William
 Test Date:2018-08-18

γ Range: 0 - 180DEG
 γ Interval: 1.0DEG
 Test System:EVERFINE GO-R5000_V2 SYSTEM V2.0.366
 Humidity:65.7%
 Test Distance:26.000m [K=1.3825]
 Remarks:

ZONAL FLUX DIAGRAM

ZONAL FLUX DIAGRAM:

γ	C0	C45	C90	C135	C180	C225	C270	C315	γ	Φ zone	Φ total	%lum, lamp
10	1083	1082	1119	1184	1226	1196	1142	1108	0- 10	1284	1284	19,19
20	427.0	409.9	422.8	580.1	785.4	728.7	524.4	437.1	10- 20	2214	3498	51.9,51.9
30	153.7	148.2	141.2	195.7	330.5	299.7	168.1	146.5	20- 30	1564	5062	75.1,75.1
40	69.07	69.23	60.07	55.09	101.2	94.03	53.91	60.23	30- 40	740.5	5802	86.1,86.1
50	39.40	38.66	30.65	27.91	39.25	36.88	28.35	33.17	40- 50	378.0	6180	91.7,91.7
60	25.72	26.06	20.78	18.55	21.54	21.32	18.30	22.00	50- 60	240.7	6421	95.2,95.2
70	12.42	15.05	14.00	11.17	10.19	11.37	12.29	14.12	60- 70	166.8	6588	97.7,97.7
80	5.359	7.876	6.564	5.581	3.713	5.410	6.074	7.419	70- 80	94.86	6682	99.1,99.1
90	0.7915	2.498	2.340	1.656	0.3426	1.530	1.973	2.295	80- 90	40.13	6723	99.7,99.7
100	0	0	0.0817	0	0.0000	0.0072	0.0146	0	90-100	2.919	6725	99.8,99.8
110	0.0001	0	0	0	0.0287	0.0287	0.0220	0.0146	100-110	0.1105	6726	99.8,99.8
120	0	0	0	0	0.0359	0.0505	0.0291	0.0291	110-120	0.1357	6726	99.8,99.8
130	0.0214	0.0072	0	0	0.0503	0.0650	0.0439	0.0656	120-130	0.2013	6726	99.8,99.8
140	0.3429	0.2872	0.1596	0.1092	0.1868	0.1375	0.1531	0.2115	130-140	0.7079	6727	99.8,99.8
150	1.097	1.002	0.7706	0.6756	0.5536	0.4702	0.4889	0.7017	140-150	2.619	6729	99.8,99.8
160	1.765	1.776	1.606	1.412	1.342	1.244	1.284	1.481	150-160	4.995	6734	99.9,99.9
170	2.246	2.375	2.372	2.147	1.938	1.929	1.937	2.231	160-170	5.158	6739	100,100
180	2.534	2.607	2.585	2.557	2.412	2.528	2.599	2.594	170-180	2.230	6742	100,100
DEG	LUMINOUS INTENSITY:×10cd									UNIT:lm		

Conical surface Flux(90deg): 6016.8 lm

%lum = 89.2%
%lamp = 89.2%

Conical surface Flux(120deg): 6420.7 lm

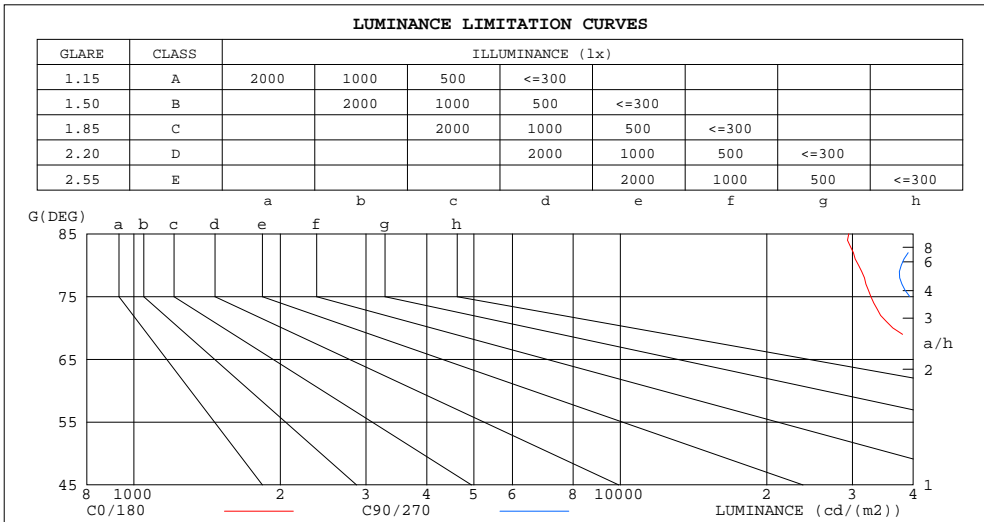
%lum = 95.2%
%lamp = 95.2%

C Range: 0 - 360DEG
C Interval: 22.5DEG
Test Speed: HIGH
Temperature:24.5DEG
Operators:William
Test Date:2018-08-18

γ Range: 0 - 180DEG
γ Interval: 1.0DEG
Test System:EVERFINE GO-R5000_V2 SYSTEM V2.0.366
Humidity:65.7%
Test Distance:26.000m [K=1.3825]
Remarks:

LUMINANCE LIMITATION CURVES

Test:U:230.01V I:0.2343A P:50.321W PF:0.9873 Freq:50.01Hz Lamp Flux:6741.6x1 lm		
NAME: Linear High Bay Light	TYPE:LED	WEIGHT:N/A
SPEC.:N/A	DIM.:	SERIAL No.:N/A
MFR.: YOUWIN	SUR.:	Shielding Angle:N/A



LUMINANCE cd/(m2)		
G(DEG)	C0/180	C90/270
85	29491	44285
80	30870	37811
75	32735	39343
70	36325	40945
65	47569	40919
60	51445	41570
55	54340	41200
50	61316	47686
45	73572	62527

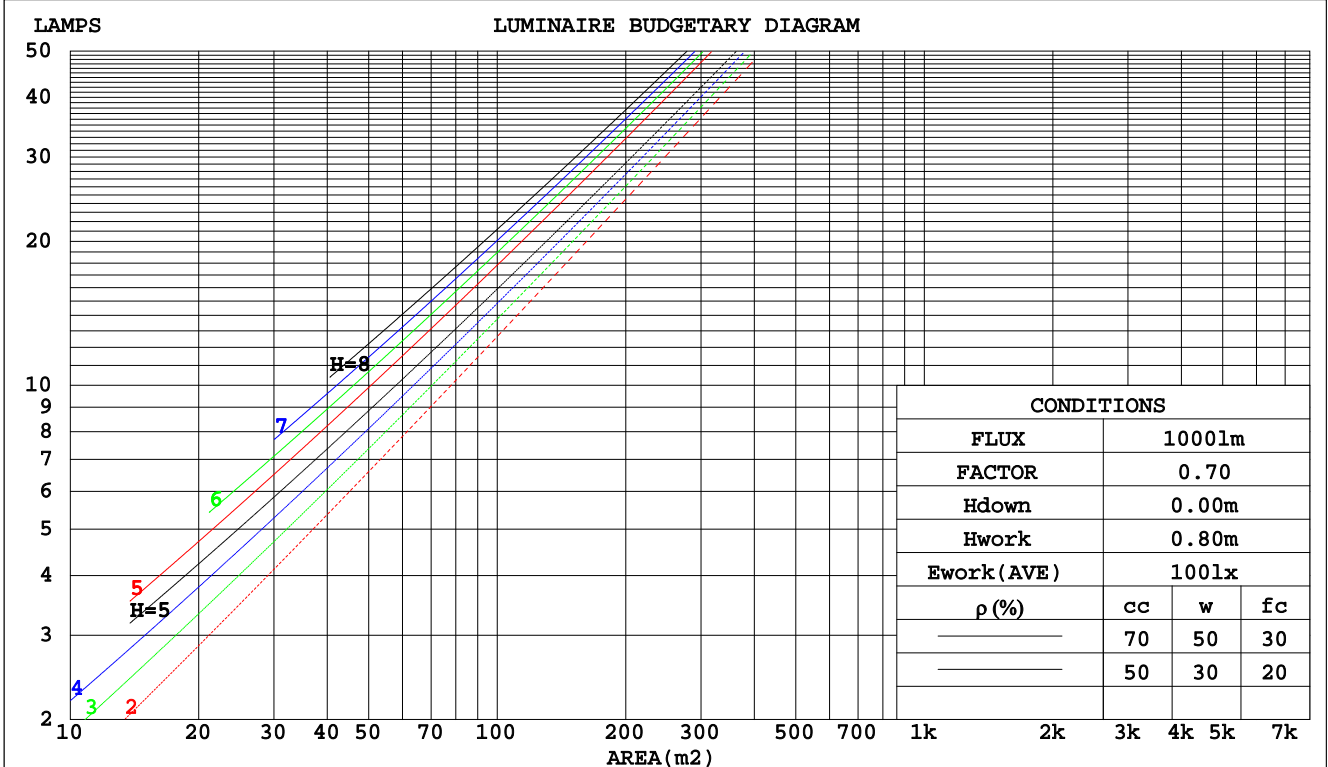
C Range: 0 - 360DEG
 C Interval: 22.5DEG
 Test Speed: HIGH
 Temperature:24.5DEG
 Operators:William
 Test Date:2018-08-18

γ Range: 0 - 180DEG
 γ Interval: 1.0DEG
 Test System:EVERFINE GO-R5000_V2 SYSTEM V2.0.366
 Humidity:65.7%
 Test Distance:26.000m [K=1.3825]
 Remarks:

CU AND LUMINAIRE BUDGETARY ESTIMATE DIAGRAM

Test:U:230.01V I:0.2343A P:50.321W PF:0.9873 Freq:50.01Hz Lamp Flux:6741.6x1 lm		
NAME: Linear High Bay Light	TYPE:LED	WEIGHT:N/A
SPEC.:N/A	DIM.:	SERIAL No.:N/A
MFR.: YOUWIN	SUR.:	Shielding Angle:N/A

pcc	80%			70%			50%			30%			10%			0
	50%	30%	10%	50%	30%	10%	50%	30%	10%	50%	30%	10%	50%	30%	10%	
pw																0
pfc																0
RCR	RCR:Room Cavity Ratio Coefficients of Utilization(CU)															
0.0	1.19	1.19	1.19	1.16	1.16	1.16	1.11	1.11	1.11	1.06	1.06	1.06	1.02	1.02	1.02	.00
1.0	1.10	1.08	1.05	1.08	1.06	1.04	1.04	1.02	1.00	1.00	.99	.97	.97	.95	.94	.93
2.0	1.03	.98	.95	1.01	.97	.94	.97	.94	.92	.94	.92	.90	.92	.90	.88	.86
3.0	.96	.91	.87	.94	.90	.86	.92	.88	.85	.89	.86	.83	.87	.84	.82	.81
4.0	.90	.85	.80	.89	.84	.80	.87	.82	.79	.85	.81	.78	.83	.80	.77	.76
5.0	.85	.79	.75	.84	.79	.75	.82	.78	.74	.81	.77	.73	.79	.75	.73	.71
6.0	.80	.75	.71	.80	.74	.70	.78	.73	.70	.77	.73	.69	.75	.72	.69	.67
7.0	.76	.71	.67	.76	.70	.66	.74	.70	.66	.73	.69	.66	.72	.68	.65	.64
8.0	.73	.67	.63	.72	.67	.63	.71	.66	.63	.70	.66	.63	.69	.65	.62	.61
9.0	.69	.64	.60	.69	.64	.60	.68	.63	.60	.67	.63	.60	.66	.62	.59	.58
10.0	.66	.61	.57	.66	.61	.57	.65	.60	.57	.64	.60	.57	.64	.60	.57	.56



C Range: 0 - 360DEG
 C Interval: 22.5DEG
 Test Speed: HIGH
 Temperature:24.5DEG
 Operators:William
 Test Date:2018-08-18

γ Range: 0 - 180DEG
 γ Interval: 1.0DEG
 Test System:EVERFINE GO-R5000_V2 SYSTEM V2.0.366
 Humidity:65.7%
 Test Distance:26.000m [K=1.3825]
 Remarks:

WEC AND CCEC

Test:U:230.01V I:0.2343A P:50.321W PF:0.9873 Freq:50.01Hz Lamp Flux:6741.6x1 lm		
NAME: Linear High Bay Light	TYPE:LED	WEIGHT:N/A
SPEC.:N/A	DIM.:	SERIAL No.:N/A
MFR.: YOUWIN	SUR.:	Shielding Angle:N/A

ρcc	80%			70%			50%			30%			10%			0
ρw	50%	30%	10%	50%	30%	10%	50%	30%	10%	50%	30%	10%	50%	30%	10%	0
ρfc	20%			20%			20%			20%			20%			0
RCR	RCR:Room Cavity Ratio						Wall Exitance Coefficients(WEC)									
0.0																
1.0	.187	.106	.034	.180	.103	.033	.167	.096	.031	.155	.090	.029	.145	.084	.027	
2.0	.175	.096	.029	.169	.093	.029	.159	.088	.027	.149	.083	.026	.139	.079	.025	
3.0	.164	.087	.026	.159	.085	.026	.150	.081	.025	.141	.077	.024	.133	.074	.023	
4.0	.154	.080	.023	.149	.078	.023	.141	.075	.022	.134	.072	.022	.127	.069	.021	
5.0	.144	.074	.021	.141	.072	.021	.134	.070	.021	.127	.067	.020	.121	.065	.020	
6.0	.136	.068	.020	.133	.067	.019	.127	.065	.019	.121	.063	.019	.116	.061	.018	
7.0	.129	.064	.018	.126	.063	.018	.121	.061	.018	.116	.059	.017	.111	.058	.017	
8.0	.122	.060	.017	.120	.059	.017	.115	.058	.016	.111	.056	.016	.107	.055	.016	
9.0	.117	.056	.016	.114	.056	.016	.110	.054	.015	.106	.053	.015	.102	.052	.015	
10.0	.111	.053	.015	.109	.053	.015	.105	.052	.015	.102	.051	.014	.098	.050	.014	

ρcc	80%			70%			50%			30%			10%			0
ρw	50%	30%	10%	50%	30%	10%	50%	30%	10%	50%	30%	10%	50%	30%	10%	0
ρfc	20%			20%			20%			20%			20%			0
RCR	RCR:Room Cavity Ratio						Ceiling Cavity Exitance Coefficients(CCEC)									
0.0	.193	.193	.193	.165	.165	.165	.112	.112	.112	.065	.065	.065	.021	.021	.021	
1.0	.174	.159	.146	.149	.137	.126	.102	.094	.087	.059	.054	.051	.019	.018	.016	
2.0	.159	.135	.114	.136	.116	.099	.093	.080	.069	.054	.047	.040	.017	.015	.013	
3.0	.146	.116	.092	.125	.100	.079	.086	.069	.056	.050	.041	.033	.016	.013	.011	
4.0	.135	.101	.075	.116	.087	.065	.080	.061	.046	.046	.036	.027	.015	.012	.009	
5.0	.126	.089	.062	.108	.077	.054	.075	.054	.038	.043	.032	.023	.014	.010	.007	
6.0	.118	.080	.053	.102	.069	.046	.070	.048	.032	.041	.029	.019	.013	.009	.006	
7.0	.111	.072	.045	.096	.063	.039	.066	.044	.028	.038	.026	.017	.012	.008	.005	
8.0	.105	.066	.039	.090	.057	.034	.063	.040	.024	.036	.024	.014	.012	.008	.005	
9.0	.100	.061	.034	.086	.053	.030	.059	.037	.021	.035	.022	.013	.011	.007	.004	
10.0	.095	.056	.030	.082	.049	.026	.057	.034	.019	.033	.020	.011	.011	.007	.004	

C Range: 0 - 360DEG
 C Interval: 22.5DEG
 Test Speed: HIGH
 Temperature:24.5DEG
 Operators:William
 Test Date:2018-08-18

γ Range: 0 - 180DEG
 γ Interval: 1.0DEG
 Test System:EVERFINE GO-R5000_V2 SYSTEM V2.0.366
 Humidity:65.7%
 Test Distance:26.000m [K=1.3825]
 Remarks:

UGR(Unified Glare Rating) Table

Test:U:230.01V I:0.2343A P:50.321W PF:0.9873 Freq:50.01Hz Lamp Flux:6741.6x1 lm										
NAME: Linear High Bay Light					TYPE:LED			WEIGHT:N/A		
SPEC.:N/A					DIM.:			SERIAL No.:N/A		
MFR.: YOUWIN					SUR.:			Shielding Angle:N/A		
ceiling/cavity	0.7	0.7	0.5	0.5	0.3	0.7	0.7	0.5	0.5	0.3
walls	0.5	0.3	0.5	0.3	0.3	0.5	0.3	0.5	0.3	0.3
working plane	0.2	0.2	0.2	0.2	0.2	0.2	0.2	0.2	0.2	0.2
Room dimensions	Viewed crosswise					Viewed endwise				
x = 2H y = 2H	22.9	23.8	23.1	24.0	24.2	22.2	23.1	22.4	23.3	23.4
3H	23.8	24.6	24.0	24.8	25.0	23.4	24.2	23.6	24.4	24.6
4H	24.1	24.9	24.3	25.1	25.3	23.9	24.7	24.2	25.0	25.2
6H	24.3	25.1	24.6	25.3	25.6	24.4	25.1	24.7	25.4	25.6
8H	24.4	25.2	24.8	25.4	25.7	24.6	25.3	24.9	25.6	25.8
12H	24.5	25.2	24.8	25.5	25.8	24.7	25.4	25.1	25.7	26.0
4H 2H	23.4	24.2	23.6	24.4	24.6	22.8	23.6	23.1	23.8	24.1
3H	24.4	25.1	24.7	25.4	25.6	24.2	24.9	24.5	25.2	25.5
4H	24.8	25.4	25.2	25.8	26.1	24.9	25.5	25.2	25.8	26.2
6H	25.2	25.8	25.6	26.1	26.5	25.5	26.1	25.9	26.4	26.8
8H	25.4	25.9	25.8	26.2	26.6	25.8	26.3	26.2	26.6	27.0
12H	25.5	26.0	25.9	26.3	26.7	26.0	26.5	26.4	26.9	27.3
8H 4H	25.1	25.6	25.5	26.0	26.4	25.2	25.7	25.6	26.1	26.4
6H	25.7	26.1	26.1	26.5	26.9	26.0	26.4	26.4	26.8	27.2
8H	25.9	26.3	26.4	26.7	27.2	26.4	26.8	26.8	27.2	27.6
12H	26.1	26.5	26.6	26.9	27.4	26.8	27.1	27.2	27.5	28.0
12H 4H	25.1	25.6	25.5	26.0	26.4	25.2	25.7	25.6	26.0	26.4
6H	25.8	26.2	26.2	26.6	27.0	26.1	26.4	26.5	26.9	27.3
8H	26.1	26.4	26.6	26.9	27.3	26.5	26.9	27.0	27.3	27.8
Variations with the observer position at spacings:										
S = 1.0H	+ 0.4 / - 0.5					+ 0.4 / - 0.4				
1.5H	+ 0.4 / - 0.3					+ 0.2 / - 0.4				
2.0H	+ 0.5 / - 0.5					+ 0.3 / - 0.5				

CIE Pub.117, 6742 lm Total Lamp Luminous Flux Corrected (8log(F/F0) = 6.6)

C Range: 0 - 360DEG
 C Interval: 22.5DEG
 Test Speed: HIGH
 Temperature:24.5DEG
 Operators:William
 Test Date:2018-08-18

γ Range: 0 - 180DEG
 γ Interval: 1.0DEG
 Test System:EVERFINE GO-R5000_V2 SYSTEM V2.0.366
 Humidity:65.7%
 Test Distance:26.000m [K=1.3825]
 Remarks:

UTILIZATION FACTORS TABLE

Test:U:230.01V I:0.2343A P:50.321W PF:0.9873 Freq:50.01Hz Lamp Flux:6741.6x1 lm		
NAME: Linear High Bay Light	TYPE:LED	WEIGHT:N/A
SPEC.:N/A	DIM.:	SERIAL No.:N/A
MFR.: YOUWIN	SUR.:	Shielding Angle:N/A

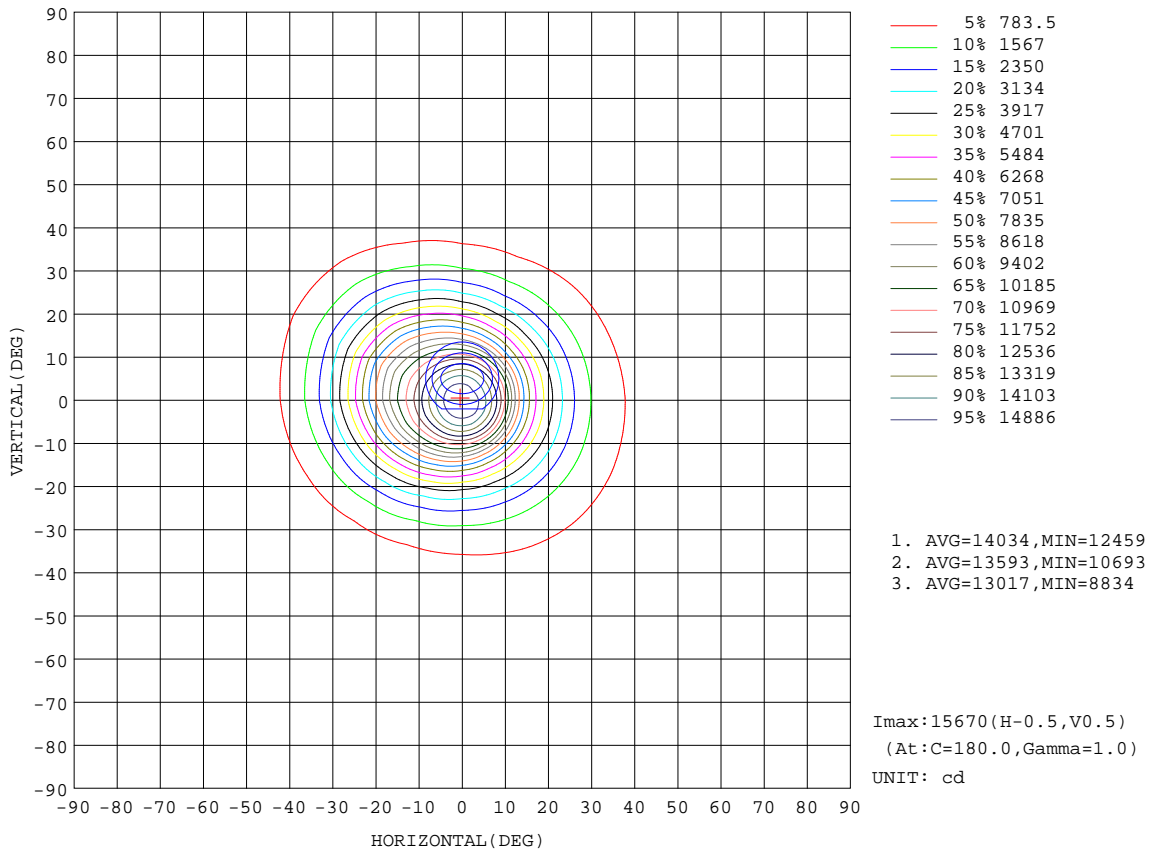
REFLECTANCE										
Ceiling	0.8	0.8	0.8	0.7	0.7	0.7	0.5	0.5	0.5	0
Walls	0.7	0.5	0.3	0.7	0.5	0.3	0.7	0.5	0.3	0
Working plane	0.2	0.2	0.2	0.2	0.2	0.2	0.2	0.2	0.2	0
ROOM INDEX	UTILIZATION FACTORS(PERCENT) $k(RI) \times RCR = 5$									
k = 0.60	83	76	72	82	76	72	82	75	71	67
0.80	91	84	80	90	84	80	89	83	79	75
1.00	96	89	85	95	89	85	93	89	84	80
1.25	100	94	90	99	93	90	97	92	89	84
1.50	103	98	94	102	97	93	99	95	92	87
2.00	106	101	98	105	100	97	102	98	95	90
2.50	108	104	100	107	103	100	103	100	98	91
3.00	110	106	103	108	105	102	105	102	100	93
4.00	112	109	107	110	108	105	107	104	103	95
5.00	114	111	109	112	109	107	108	106	104	96
ROOM INDEX	UF(total)									Direct
According to DIN EN 13032-2 2004			Suspended				SHRNM = 1.25			

C Range: 0 - 360DEG
 C Interval: 22.5DEG
 Test Speed: HIGH
 Temperature:24.5DEG
 Operators:William
 Test Date:2018-08-18

γ Range: 0 - 180DEG
 γ Interval: 1.0DEG
 Test System:EVERFINE GO-R5000_V2 SYSTEM V2.0.366
 Humidity:65.7%
 Test Distance:26.000m [K=1.3825]
 Remarks:

ISOCANDELA DIAGRAM

Test:U:230.01V I:0.2343A P:50.321W PF:0.9873 Freq:50.01Hz Lamp Flux:6741.6x1 lm		
NAME: Linear High Bay Light	TYPE:LED	WEIGHT:N/A
SPEC.:N/A	DIM.:	SERIAL No.:N/A
MFR.: YOUWIN	SUR.:	Shielding Angle:N/A

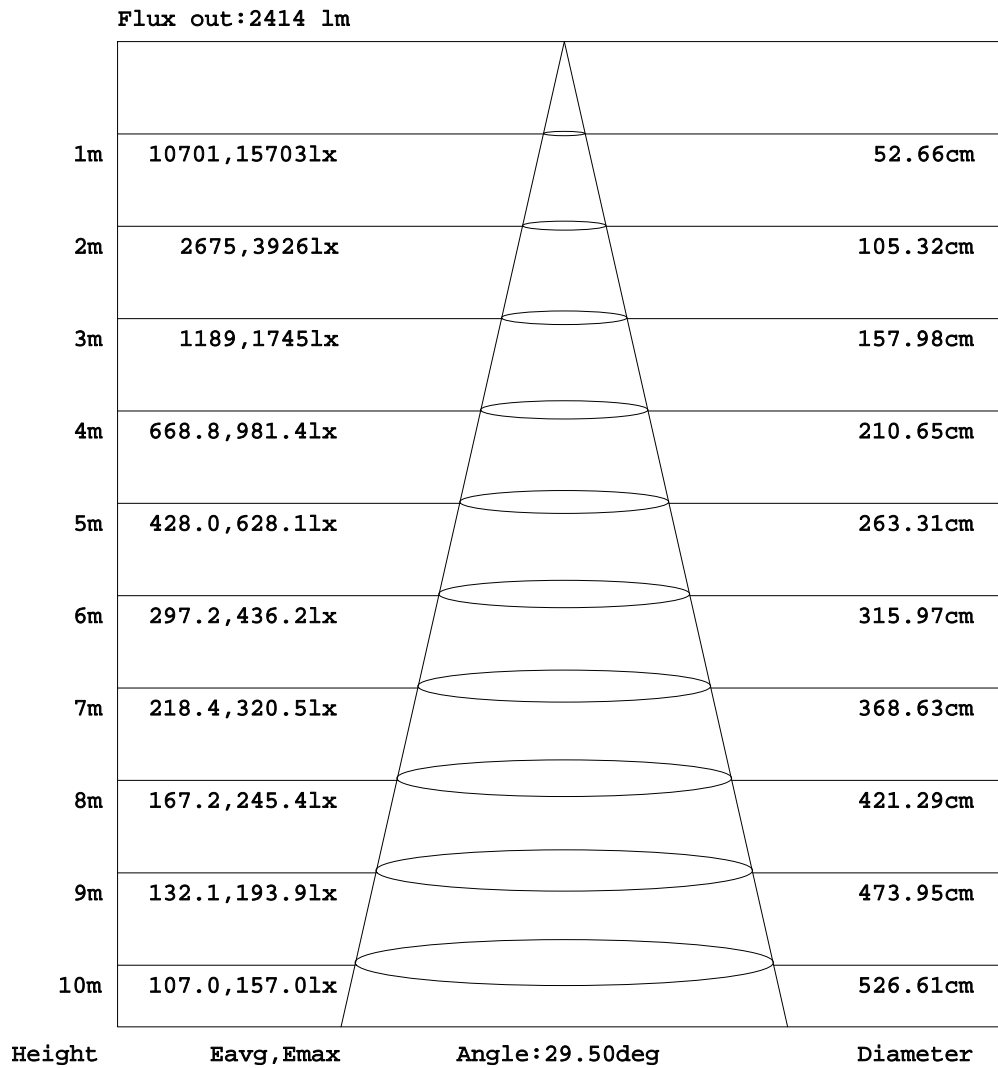


C Range: 0 - 360DEG
 C Interval: 22.5DEG
 Test Speed: HIGH
 Temperature:24.5DEG
 Operators:William
 Test Date:2018-08-18

γ Range: 0 - 180DEG
 γ Interval: 1.0DEG
 Test System:EVERFINE GO-R5000_V2 SYSTEM V2.0.366
 Humidity:65.7%
 Test Distance:26.000m [K=1.3825]
 Remarks:

AAI Figure

Test:U:230.01V I:0.2343A P:50.321W PF:0.9873 Freq:50.01Hz Lamp Flux:6741.6x1 lm		
NAME: Linear High Bay Light	TYPE:LED	WEIGHT:N/A
SPEC.:N/A	DIM.:	SERIAL No.:N/A
MFR.: YOUWIN	SUR.:	Shielding Angle:N/A



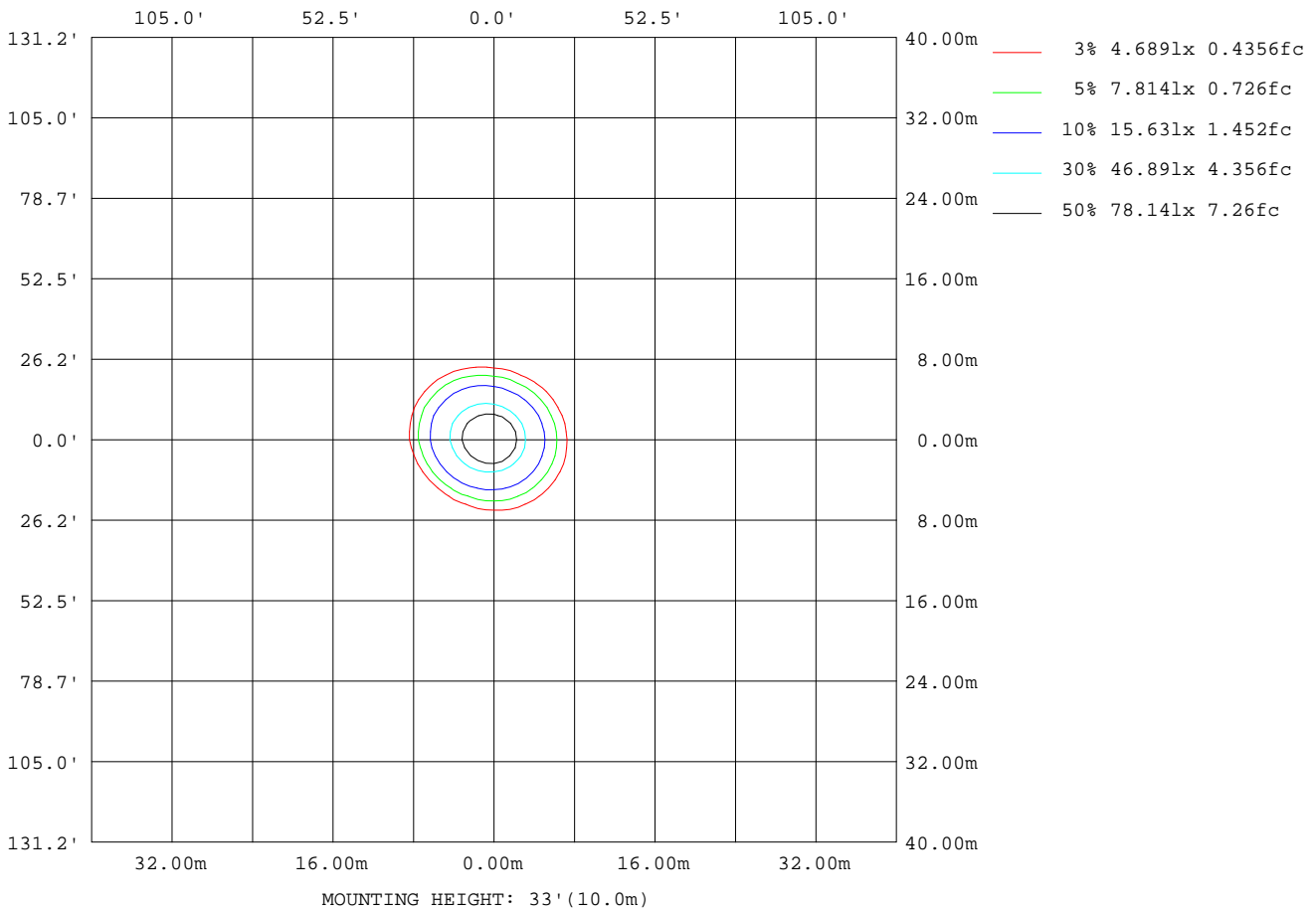
Note:The Curves indicate the illuminated area and the average illumination when the luminaire is at different distance.

C Range: 0 - 360DEG
 C Interval: 22.5DEG
 Test Speed: HIGH
 Temperature:24.5DEG
 Operators:William
 Test Date:2018-08-18

γ Range: 0 - 180DEG
 γ Interval: 1.0DEG
 Test System:EVERFINE GO-R5000_V2 SYSTEM V2.0.366
 Humidity:65.7%
 Test Distance:26.000m [K=1.3825]
 Remarks:

ISOLUX DIAGRAM

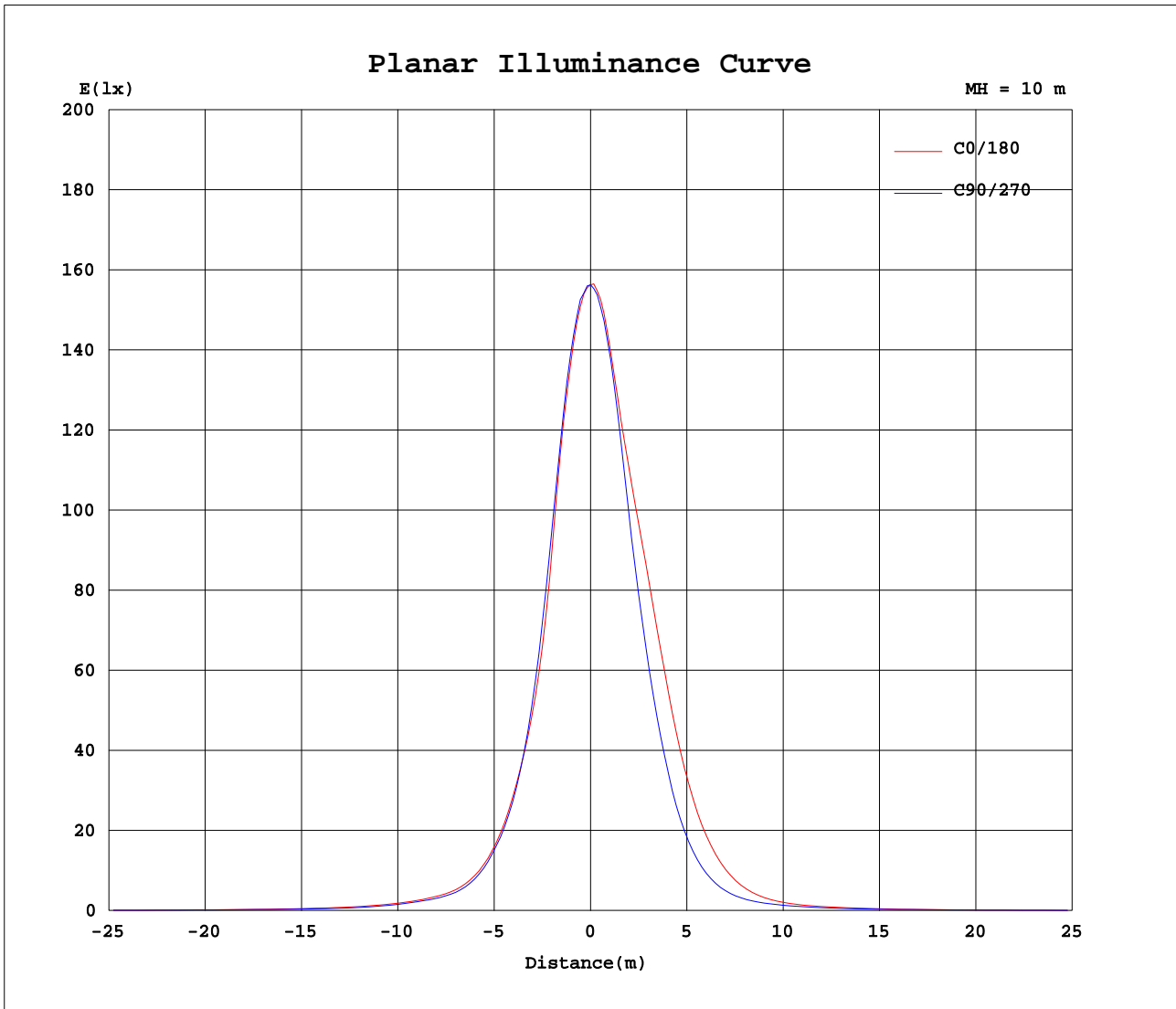
Test:U:230.01V I:0.2343A P:50.321W PF:0.9873 Freq:50.01Hz Lamp Flux:6741.6x1 lm		
NAME: Linear High Bay Light	TYPE:LED	WEIGHT:N/A
SPEC.:N/A	DIM.:	SERIAL No.:N/A
MFR.: YOUWIN	SUR.:	Shielding Angle:N/A



C Range: 0 - 360DEG
 C Interval: 22.5DEG
 Test Speed: HIGH
 Temperature:24.5DEG
 Operators:William
 Test Date:2018-08-18

γ Range: 0 - 180DEG
 γ Interval: 1.0DEG
 Test System:EVERFINE GO-R5000_V2 SYSTEM V2.0.366
 Humidity:65.7%
 Test Distance:26.000m [K=1.3825]
 Remarks:

Planar Illuminance Curve



C Range: 0 - 360DEG
C Interval: 22.5DEG
Test Speed: HIGH
Temperature: 24.5DEG
Operators: William
Test Date: 2018-08-18

γ Range: 0 - 180DEG
 γ Interval: 1.0DEG
Test System: EVERFINE GO-R5000_V2 SYSTEM V2.0.366
Humidity: 65.7%
Test Distance: 26.000m [K=1.3825]
Remarks:

LUMINOUS DISTRIBUTION INTENSITY DATA

Test:U:230.01V I:0.2343A P:50.321W PF:0.9873 Freq:50.01Hz Lamp Flux:6741.6x1 lm		
NAME: Linear High Bay Light	TYPE:LED	WEIGHT:N/A
SPEC.:N/A	DIM.:	SERIAL No.:N/A
MFR.: YOUWIN	SUR.:	Shielding Angle:N/A

Table--1

UNIT: x10cd

C(DEG) γ (DEG)	0	22.5	45	67.5	90	112.5	135	157.5	180	202.5	225	247.5	270	292.5	315	337.5			
0	1563	1563	1563	1563	1563	1563	1563	1563	1563	1563	1563	1563	1563	1563	1563	1563			
5	1435	1438	1442	1453	1454	1466	1466	1466	1461	1455	1450	1447	1441	1438	1432	1434			
10	1083	1079	1082	1099	1119	1151	1184	1215	1226	1217	1196	1170	1142	1126	1108	1100			
15	660	650	651	667	712	783	874	966	1018	1015	960	882	806	743	697	676			
20	427	422	410	404	423	480	580	695	785	800	729	620	524	463	437	433			
25	262	259	252	246	248	277	347	443	535	554	491	392	307	265	257	262			
30	154	154	148	145	141	153	196	259	330	349	300	225	168	146	146	151			
35	95.0	95.2	92.0	88.7	83.1	83.4	100.0	139	188	203	172	122	90.4	81.3	86.9	90.5			
40	69.1	70.3	69.2	66.8	60.1	53.4	55.1	73.8	101	112	94.0	66.3	53.9	54.0	60.2	64.8			
45	52.0	53.1	53.4	49.3	44.2	39.1	38.0	45.3	57.9	63.7	55.2	41.6	38.0	39.6	45.2	49.3			
50	39.4	39.6	38.7	34.9	30.6	27.5	27.9	33.7	39.3	41.6	36.9	29.9	28.4	28.8	33.2	37.6			
55	31.2	30.8	31.0	27.8	23.6	21.2	22.9	25.8	29.3	30.1	28.0	23.3	21.7	22.2	26.4	29.2			
60	25.7	25.0	26.1	23.2	20.8	18.1	18.5	19.4	21.5	21.8	21.3	19.1	18.3	18.4	22.0	23.8			
65	20.1	19.8	21.6	19.7	17.3	14.5	14.5	14.0	15.1	15.2	15.7	14.5	14.9	16.0	18.7	19.1			
70	12.4	12.1	15.0	14.8	14.0	11.5	11.2	9.97	10.2	10.3	11.4	11.1	12.3	13.1	14.1	12.5			
75	8.47	8.79	12.6	11.1	10.2	8.63	8.72	7.06	6.52	6.96	9.01	8.06	9.25	9.86	11.5	8.96			
80	5.36	6.30	7.88	7.89	6.56	6.22	5.58	4.39	3.71	4.29	5.41	5.84	6.07	7.20	7.42	6.15			
85	2.57	3.84	4.78	5.04	3.86	3.93	3.37	2.45	1.60	2.30	3.13	3.77	3.53	4.69	4.53	3.73			
90	0.79	1.85	2.50	2.73	2.34	1.97	1.66	1.05	0.34	0.97	1.53	2.05	1.97	2.45	2.29	1.81			
95	0.00	0.00	0.01	0.67	0.90	0.71	0.08	0.00	0.00	0.00	0.02	0.62	0.81	0.77	0.01	0.00			
100	0.00	0.00	0.00	0.02	0.08	0.01	0.00	0.00	0.00	0.00	0.01	0.01	0.01	0.01	0.00	0.00			
105	0.12	0.00	0.00	0.00	0.00	0.00	0.00	0.00	0.02	0.01	0.01	0.01	0.01	0.01	0.01	0.01			
110	0.00	0.00	0.00	0.00	0.00	0.00	0.00	0.00	0.03	0.03	0.03	0.02	0.02	0.01	0.01	0.02			
115	0.00	0.00	0.00	0.00	0.00	0.00	0.00	0.00	0.03	0.03	0.03	0.03	0.02	0.02	0.02	0.02			
120	0.00	0.00	0.00	0.00	0.00	0.00	0.00	0.00	0.04	0.04	0.05	0.04	0.03	0.03	0.03	0.03			
125	0.00	0.01	0.01	0.00	0.00	0.00	0.00	0.00	0.04	0.06	0.04	0.04	0.04	0.03	0.04	0.05			
130	0.02	0.02	0.01	0.00	0.00	0.00	0.00	0.01	0.05	0.07	0.07	0.06	0.04	0.04	0.07	0.08			
135	0.12	0.14	0.09	0.06	0.04	0.01	0.00	0.03	0.10	0.10	0.09	0.08	0.09	0.08	0.12	0.16			
140	0.34	0.36	0.29	0.24	0.16	0.12	0.11	0.13	0.19	0.17	0.14	0.15	0.15	0.18	0.21	0.30			
145	0.67	0.70	0.58	0.52	0.39	0.34	0.33	0.33	0.30	0.29	0.26	0.28	0.27	0.33	0.40	0.54			
150	1.10	1.14	1.00	0.92	0.77	0.69	0.68	0.60	0.55	0.52	0.47	0.50	0.49	0.61	0.70	0.89			
155	1.47	1.55	1.39	1.32	1.15	1.06	1.05	0.94	0.93	0.89	0.84	0.85	0.82	0.97	1.01	1.32			
160	1.77	1.88	1.78	1.73	1.61	1.50	1.41	1.31	1.34	1.30	1.24	1.28	1.28	1.34	1.48	1.75			
165	2.06	2.14	2.07	2.11	1.99	1.81	1.81	1.71	1.70	1.68	1.62	1.65	1.66	1.83	1.99	2.09			
170	2.25	2.41	2.38	2.43	2.37	2.21	2.15	2.06	1.94	1.93	1.93	1.94	1.94	2.05	2.23	2.32			
175	2.52	2.58	2.61	2.70	2.63	2.48	2.49	2.37	2.25	2.25	2.23	2.27	2.26	2.38	2.47	2.50			
180	2.53	2.53	2.61	2.61	2.59	2.61	2.56	2.43	2.41	2.48	2.53	2.61	2.60	2.61	2.59	2.54			

C Range: 0 - 360DEG
 C Interval: 22.5DEG
 Test Speed: HIGH
 Temperature:24.5DEG
 Operators:William
 Test Date:2018-08-18

γ Range: 0 - 180DEG
 γ Interval: 1.0DEG
 Test System:EVERFINE GO-R5000_V2 SYSTEM V2.0.366
 Humidity:65.7%
 Test Distance:26.000m [K=1.3825]
 Remarks: